

REV	LOCATIONS	DESCRIPTION	DATE	REVISER	APPD
1	△	Change the structure and size	24/AUG/20	KATE	CHERRY
2	△	Add marking code	09/OCT/25	PYD	LEO

**SPECIFICATIONS**

**Electrical Characteristic**

Current Rating:  
 Signal contacts: 7.5A  
 Power contacts: 10 to 40A  
 Voltage Rating: 300V  
 Contact Resistance: 5mΩ Max.  
 Insulation Resistance: 5000 MΩ Min.  
 Dielectric Withstanding Voltage: 1000V AC r.m.s Min.  
 Temperature Range-Operating: -55°C ~ +105°C

**Material and plating**

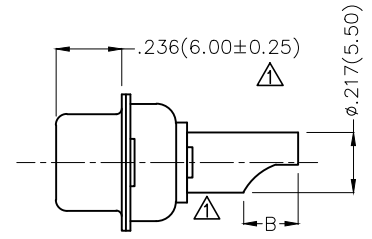
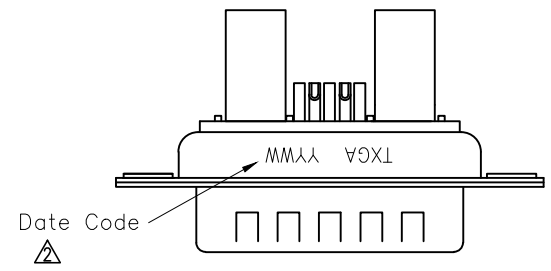
Shell: Steel, Nickel Plated 80μ" Min (For Black Resin)  
 Stainless Steel, Nickel Plated 80μ" Min (For Green Resin)  
 Back Shell: Steel, Tin Plated 100μ" Min (For Black Resin)  
 Stainless Steel, Nickel Plated 80μ" Min (For Green Resin)  
 Insulator: Glass Filled Thermoplastic (UL 94V-0)  
 Signal Contacts: Brass/ Gold Plated  
 Power Contacts: Brass/ Gold Plated

Type	Part NO.	A	B	Wire	Current Rating(A)
A	FDP0701-MOWS1XXXXKA	ø.098(2.50)	.177(4.50)	14#~16#	10
B	FDP0701-MOWS1XXXXKB	ø.142(3.60)	.197(5.00)	10#~12#	20
C	FDP0701-MOWS1XXXXKC	ø.173(4.40)	.217(5.50)	8#~10#	30
D	FDP0701-MOWS1XXXXKD	ø.217(5.50)	.217(5.50)	6#~8#	40

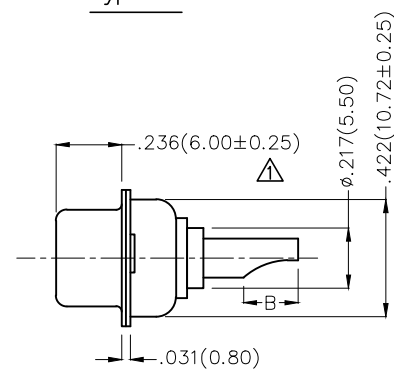
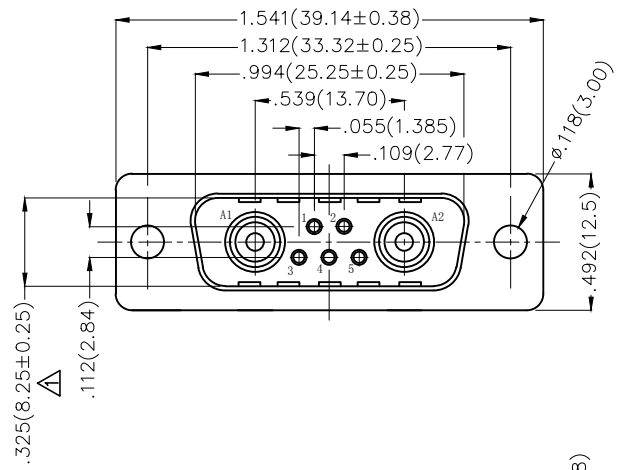
**Ordering Information**

FDP 07 01 — MO W S 1 XX XX K X  
 1 2 3 4 5 6 7 8 9 10 11

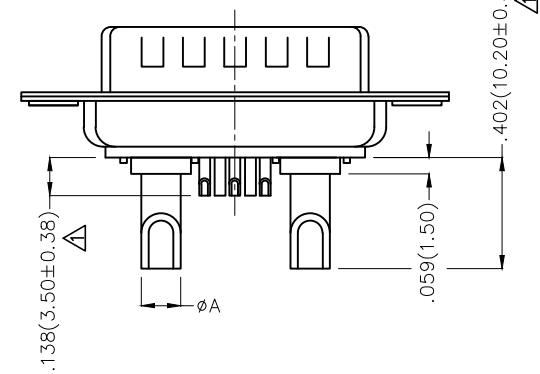
1 Category FDP-Hight current D-SUB connector	2 Circuits 07-7W2	3 Distinction No. 01	4 Type MO-Male	5 Assembly Layout W-Welding Type
6 Entry Angle S-180° Vertical	7 Plating 1-Gold Plated	8 Thickness of Plating 03-3μ" 15-15μ" Custom Plate Available	9 Color-Resin K6-Black GN-Green	10 Packaging K-Tray
				11 Distinction Type A-Type A B-Type B C-Type C D-Type D




Type D



Type A/B/C



THIRD ANGLE PROJECTION	GENERAL TOLERANCES (UNLESS SPECIFIED)		APPROVE BY FRANK	DATE 19/JUL/13	PART NO. FDP0701-MOWS1XXK6KD	ITEM NO. FDP0701-M	 Leader Of Industry
	X.±.012(0.30)	X.±5'	CHECKED BY CHERRY	DATE 19/JUL/13	TITLE Hight current D-SUB connector 7W2 180° Vertical Male	REV 2	
DESIGN UNITS Inch (metric)	X.XX±.008(0.20)	.X'±2'	DRAWN BY JACOB	DATE 19/JUL/13	THIS DRAWING CONTAINS INFORMATION THAT IS PROPRIETARY TO TXGA INDUSTRIAL ELECTRONICS(S.Z)CO.,LTD AND SHOULD NOT BE USED WITHOUT WRITTEN PERMISSION		
SCALE 5:1	SIZE A4	X.XX±.006(0.15)					
		X.XXX±.004(0.10)					